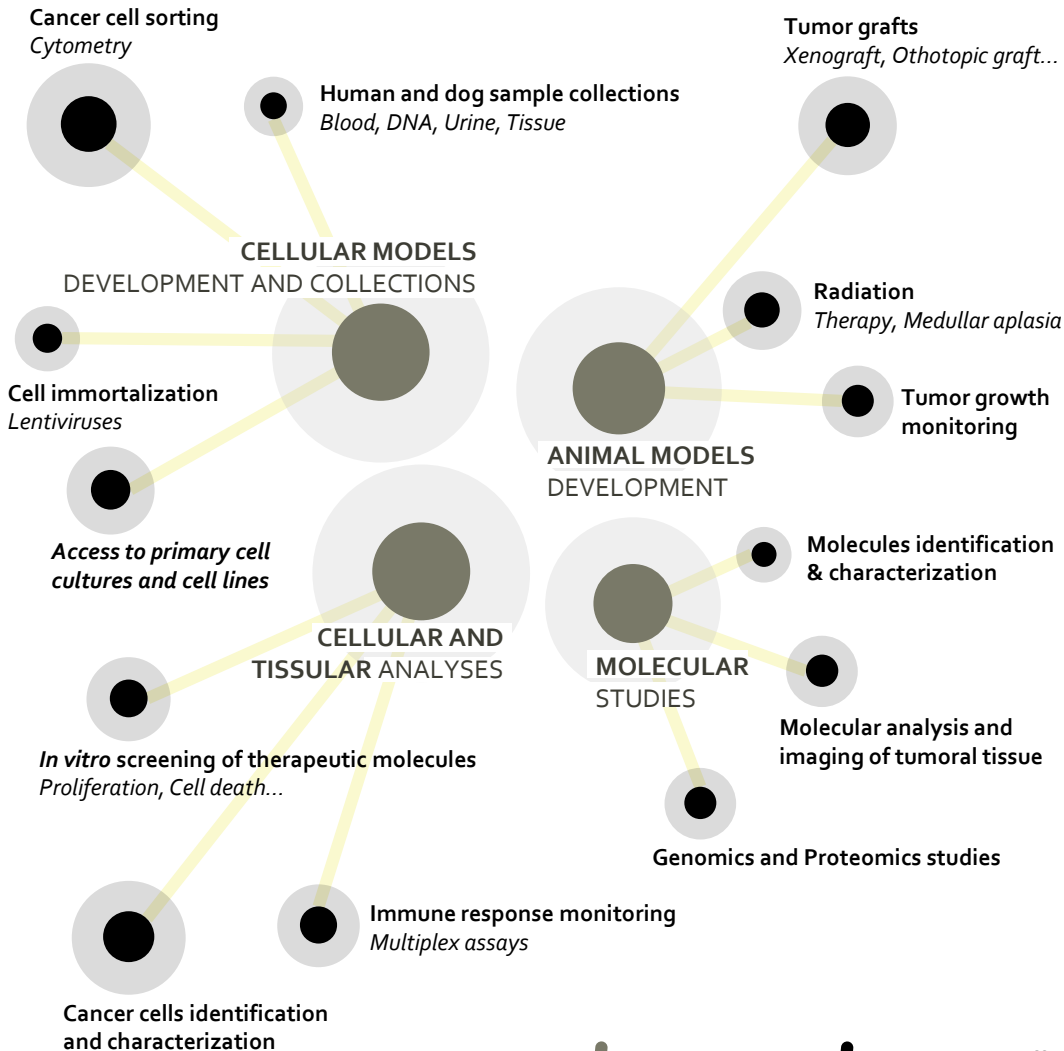
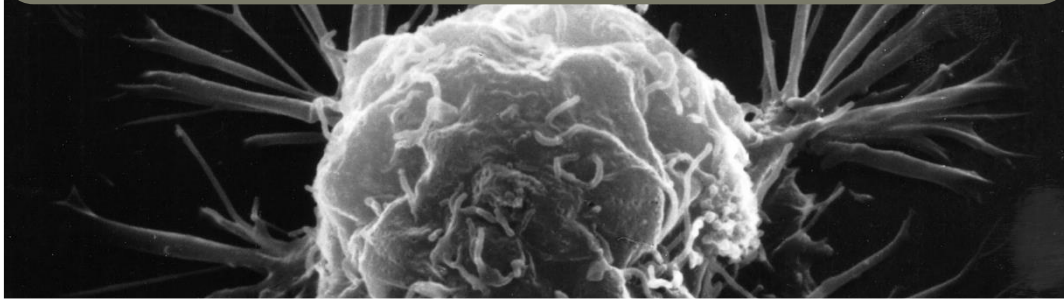


OUR SERVICES APPLIED TO CANCER THERAPY



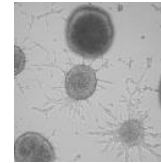
■ Your Needs    ■ Biosit service offer

A CASE STUDY

DEVELOPMENT OF A GLIOBLASTOMA *IN VIVO* THERAPEUTIC MODEL

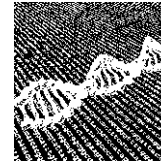
In this collaborative project with Biotrial, 4 Biosit facilities – ImpACCell, GEH, PRISM and H2P2 - were involved to characterize glioblastoma cells isolated from patients and their growth in immunodeficient mice.

Glioblastoma cells characterization



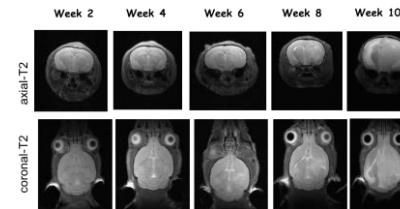
- ➔ Analysis of cell differentiation level
- ➔ Realisation of clonogenic and doubling time assays
- ➔ Analysis of Temozolomide response

Genomics



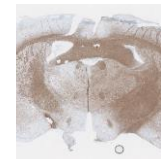
- ➔ Analysis of cancer cells transcriptome
- ➔ CGHa - Analysis of Copy number variation (CNV)

Tumorigenesis assessment



Injection of glioblastoma cells in immunodeficient mice and *in vivo* tumor growth monitoring by MRI

Histological analysis of tumor tissue



Tumor tissue imaging and characterization by immunohistochemistry